

SONELCO



SONIDO, ELECTRONICA Y COMUNICACIONES, S.A.



P6000 SYSTEM DESCRIPTION

**COMMUNICATION IN HOSPITALS
AND NURSING HOMES**

CONTENS

DESCRIPTION -----	3
ROOM CONFIGURATIONS -----	4
CALL TYPES – OPERATION	
1 - Voice communication systems between the control station and the rooms, and between the nurse in a room and other rooms. Functions: setting presence, making and cancelling calls.	
NORMAL CALL -----	5/6
BATHROOM CALL -----	7
EMERGENCY OR HELP CALL -----	8
2. Voice communication between the nurse control station and the rooms. Functions: setting presence, making and cancelling calls.	
NORMAL CALL -----	9/10
BATHROOM CALL -----	10/11
EMERGENCY OR HELP CALL -----	11/12
3. Systems for registering presence, making and cancelling calls (without voice communication)	
NORMAL CALL -----	13
BATHROOM CALL -----	14
EMERGENCY OR HELP CALL -----	15
DISCONNECTION CALL (Common to sections 1, 2 and 3) -----	16
MODULES -----	17/20
INSTALLATION EXAMPLES -----	22/27

DESCRIPTION

The Sonelco P6000 is an advanced system for patient-nurse communication. It is flexible and scalable, from those with the most basic facilities to those requiring multiple functions.

In all cases, the system provides audible and visual patient call signalling. When a call is made, the room and bed (or bathroom) numbers appear in the control station display and an acoustic signal is heard, in accordance with hospital standard VDE0834.

Also, for the module PH6011, a light appears in the corridor outside the room: red (for a normal call), red and white (a bath call) or flashing red and green (emergency call).

In intercom systems, calls can be cancelled directly at the control station, except for bath and emergency calls, which are cancelled in the room, or in the bathroom itself, if so provided. Non-voice system calls cannot be cancelled from the control point, according to hospital standard VDE0834.

The system features vary with the modules used. There are systems with voice communication between carers and patients, and others with a simple light and acoustic signal (with no voice). For the great benefits they provide, it is recommended to always install intercom systems, with a display module in the rooms. The benefits from such systems are as follows:



The module to register presence in a room (PCH6025) means the system knows exactly where the nurse is at all times. So if a call is made while a nurse is attending a patient, the system diverts the call to a room where a nurse is available. This means that the nurse immediately knows about the call.

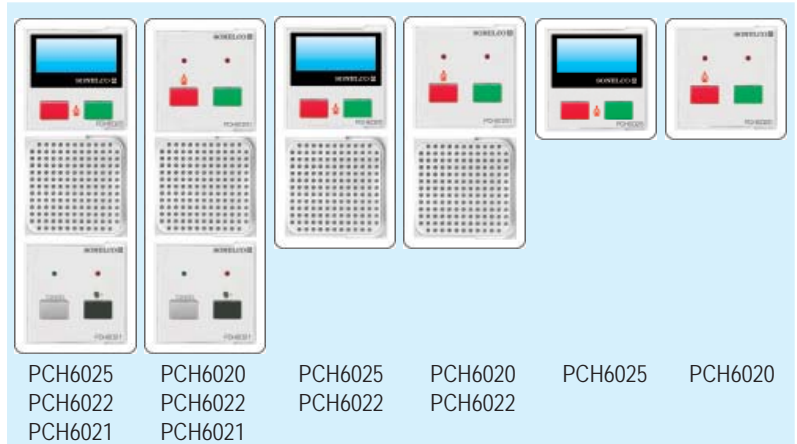
The module PCH6025 display informs the nurse in the room of calls made from another room, and identifies who is calling (room and bed) and the type of call (normal, WC or emergency).

If the module has a microphone/speaker (PCH6022) in the room, the nurse can answer the patient/resident from the control point (PH6000) immediately, thereby reassuring the patient. It avoids the unnecessary movement of staff, as many calls do not require the physical presence of a nurse. It also enables the caregiver to provide general announcements from the control point to all rooms or one room in particular.

The PCH6021 module system also allows a nurse attending a patient in one room to answer calls made from another room. This is very useful, as the room modules act like an extension of the control station, allowing immediate care to be given to other patients without unnecessary staff movement.

ROOM CONFIGURATIONS

The possible room configurations and their benefits are shown below:



<p>The room presence indicator module (PCH6025 or PCH6020) means the system knows exactly where the nurse is at all times. So if a call is made while a nurse is attending a patient, the system diverts the call to a room where there is a nurse. This means that the nurse immediately knows about the call.</p>	✓	✓	✓	✓	✓	✓
<p>If the module has a microphone/speaker (PCH6022) in the room, the nurse can immediately answer the patient/resident from the control station (PH6000), thereby reassuring the patient. It avoids the unnecessary movement of staff, as many calls do not require the physical presence of a nurse.</p>	✓	✓	✓	✓		
<p>The PCH6022 module with a microphone/speaker enables the caregiver to provide general announcements from the control point to all rooms or one room in particular.</p>	✓	✓	✓	✓		
<p>The PCH6021 module system also allows a nurse attending a patient in one room to answer calls made from another room. This is very useful, as the room modules act like an extension of the control station, allowing immediate care to be given to other patients without unnecessary staff movement.</p>	✓	✓				
<p>The module PCH6025 display informs the nurse in the room of calls made from another room, and identifies who is calling (room and bed) and the type of call (normal, bath or emergency)</p>	✓		✓		✓	

CALL TYPES - OPERATION

1. Voice communication systems between the nurse control station and the rooms, and between the nurse in a room and other rooms. Functions: Setting presence, making of cancelling calls.

Normal call

This call is made by pressing the red button on PCH6030 call modules, the pear type pushbuttons PH6031 or the nurse presence modules PCH6020/PCH6025. When a call is made, the LED incorporated in the module from which the call was made becomes reassuringly brighter. If the module has a display (PCH6025) in the room, the call is shown on it.



When a call is made, a continuous red light is seen on the electronic module in the corridor (PH6011), according to the standard VDE 0834.

The PH6000 nurse control station emits a slow beeping sound (with a frequency in accordance with the standard VDE 0834) and a signal on the display indicates the room and bed from where the call was made



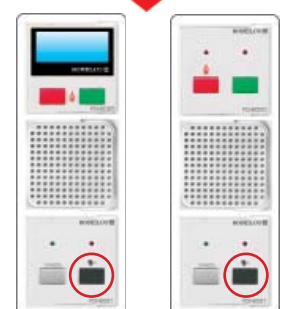
Rooms with set presence

The patient call also causes a beeping noise in the rooms where a nurse set presence (with the green button pressed), and this will be shown as a green light on the electronic module PH6011 in the corridor. The beep is heard through the room speaker of a PCH6022 system. Additionally, the red LED on a PCH6020 module lights up with greater intensity, and the call is also shown in the room on a PCH6025 module display, if fitted.



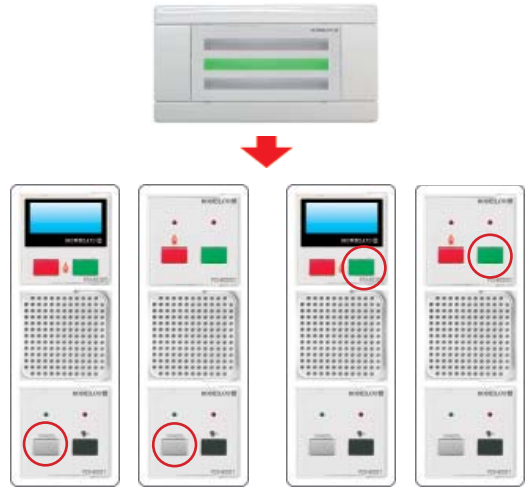
Answering a call

The call can be answered from the control point (PH6000) and from any room with set presence (with the PCH6021 module).



■ Cancelling the call

Calls can be cancelled from the floor control station (PH6000), any room with set presence (with the PCH6021 module) or from the actual room where the call was made (PCH6020 or PCH6025).



cancelling from any room with a nurse present

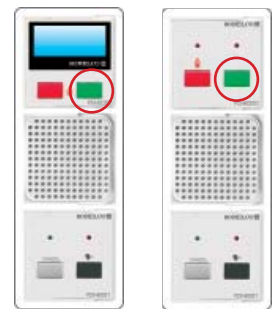
cancelling from the room itself

■ Reminder

When answering a room call by intercom, it can be put on hold, and a reminder set to attend to it later. This is done via the PH6000 control station by pressing the green button.



If answered from a room with set presence, using the module PCH6021, the reminder is set by pressing the green presence key (on the PCH6020 or PCH6025 module).



When setting the reminder, a flashing green light is seen in the corridor electronic module (PH6011) outside the room that made the call.



A reminder is cancelled by establishing the appropriate presence or from the room where the call was made.

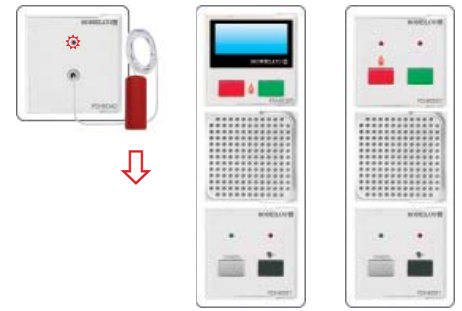
Bathroom call

This call is made by pulling the PCH6040 module cord. When making the call, the module LED lights up reassuringly. If the display module (PCH6025) is available in the room, the call is shown on it.



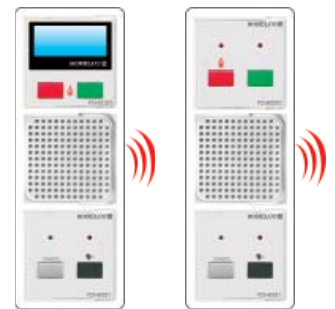
This call takes priority over normal and disconnection calls. When making the call, a continuous red and white light is seen on the electronic module in the corridor (PH6011).

An intermittent beeping sound and a signal on the display are emitted from the PH6000 control station, indicating the room from where the call was made and its type



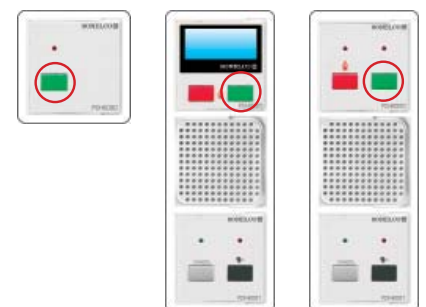
Rooms with set presence

The patient call also causes a beeping noise in the rooms where a nurse set presence (with the green button pressed), and this will be shown as a green light on the electronic module PH6011 in the corridor. The beep is heard through the room speaker of a PCH6022 system. Additionally, the red LED on a PCH6020 module lights up with greater intensity, and the call is also shown in the room on a PCH6025 module display, if fitted.



Cancelling the call

The call can only be cancelled from the bathroom or room from where the call was made if a PCH6050 module is fitted



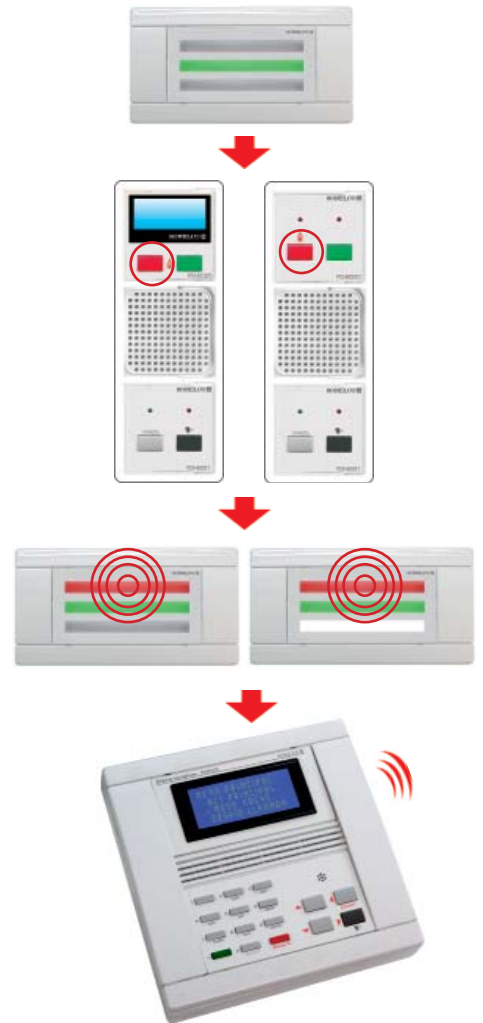
Emergency or help call

This call can be made from any module in the room or bathroom, providing the nurse's presence is acknowledged (by pressing the green button). If the module has a display (PCH6025) in the room, the call type is shown on it.



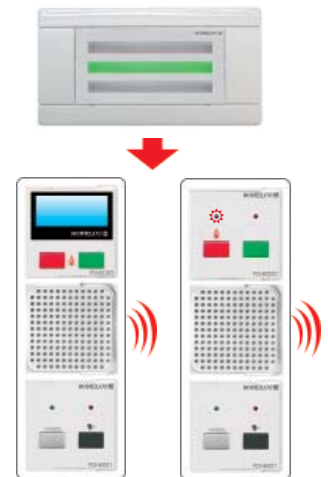
This call takes priority over all others, and a flashing red light is seen in the corridor electronic module (PH6011) after it is made. The green presence light is continuous, as well as the white light if the call was made from the bathroom.

The PH6000 floor control point emits a slow beeping sound (with a frequency in accordance with the standard VDE 0834) and a signal in the display indicates the room and bed from where the call was made



Rooms with set presence

The emergency call emits also a beeping sound in all rooms where a nurse set presence (by pressing the green button), which will be signalled by a green light on the corridor electronic module PH6011. The beep is heard through the room speaker of a PCH6022 system. Additionally, the red LED light on a PCH6020 module lights up with greater intensity, and the call is also shown in the room on a PCH6025 module display, if fitted.



Answering the call

The call can be answered from the control station (PH6000) and from any room with set presence (with the PCH6021 module)

Cancelling the call

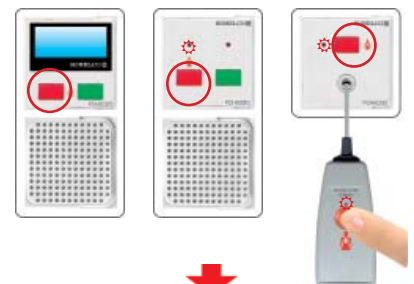
The call can only be cancelled from the bathroom or room from where the call was made



**2. Voice communication systems between the nurse control station and the rooms.
Functions: Setting presence, making of cancelling calls.**

Normal call

This call is made by pressing the red button on PCH6030 call modules, the pear type pushbuttons PH6031 or the nurse presence modules PCH6020/PCH6025. When a call is made, the LED incorporated in the module from which the call was made becomes reassuringly brighter. If the module has a display (PCH6025) in the room, the call is shown on it.



When a call is made, a continuous red light is seen on the electronic module in the corridor (PH6011), according to the standard VDE 0834.

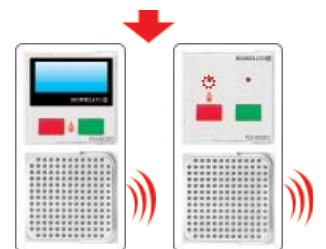


The PH6000 nurse control station emits a slow beeping sound (with a frequency in accordance with the standard VDE 0834) and a signal on the display indicates the room and bed from where the call was made



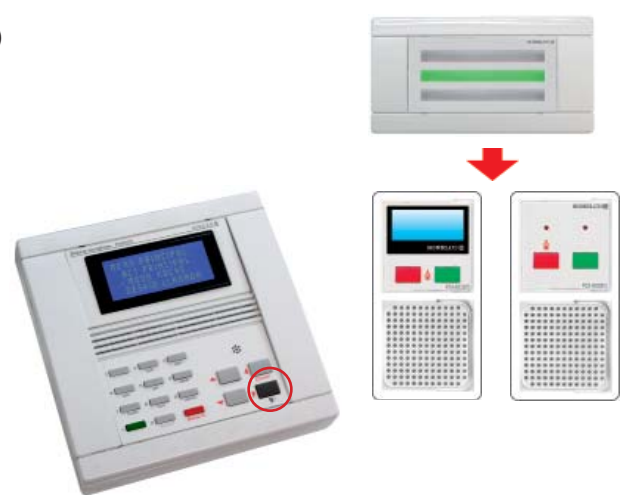
Rooms with set presence

The patient call also causes a beeping noise in the rooms where a nurse set presence (with the green button pressed), and this will be shown as a green light on the electronic module PH6011 in the corridor. The beep is heard through the room speaker of a PCH6022 system. Additionally, the red LED on a PCH6020 module lights up with greater intensity, and the call is also shown in the room on a PCH6025 module display, if fitted



Answering a call

The call can be answered from the control station (PH6000)



■ Cancelling the call

Calls can be cancelled from the floor control station (PH6000) or from the actual room where the call was made

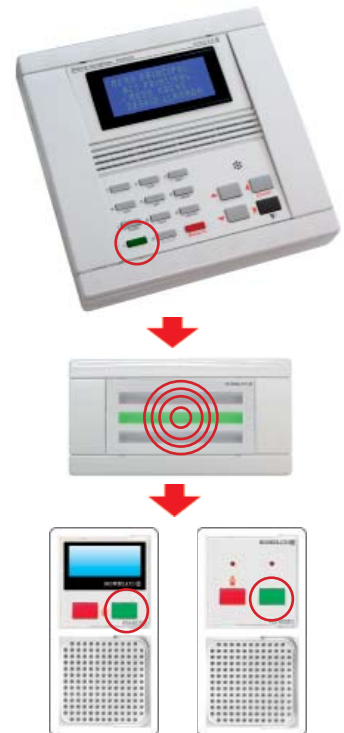


■ Reminder

When answering a room call by intercom, it can be put on hold, and a reminder set to attend to it later. This is done via the PH6000 control station by pressing the green button.



When setting the reminder, a flashing green light is seen in the corridor electronic module (PH6011) outside the room that made the call.



A reminder is cancelled by establishing the appropriate presence

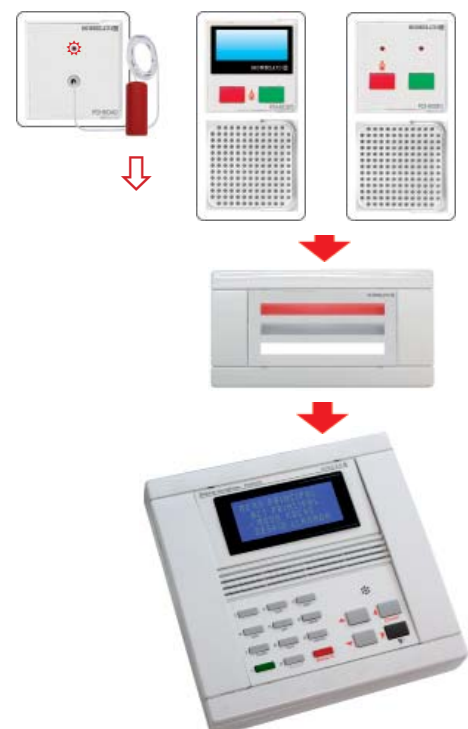
Bathroom call

This call is made by pulling the PCH6040 module cord. When making the call, the module LED lights up reassuringly. If the display module (PCH6025) is available in the room, the call is shown on it.



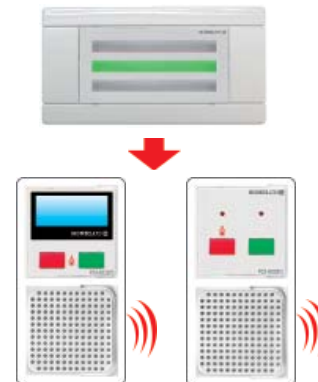
This call takes priority over normal and disconnection calls. When making the call, a continuous red and white light is seen on the electronic module in the corridor (PH6011)

An intermittent beeping sound and a signal on the display are emitted from the PH6000 control station, indicating the room from where the call was made and its type.



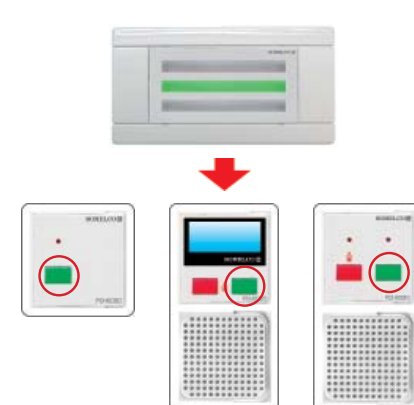
■ Rooms with set presence

The patient call also causes a beeping noise in the rooms where a nurse set presence (with the green button pressed), and this will be shown as a green light on the electronic module PH6011 in the corridor. The beep is heard through the room speaker of a PCH6022 system. Additionally, the red LED on a PCH6020 module lights up with greater intensity, and the call is also shown in the room on a PCH6025 module display, if fitted.



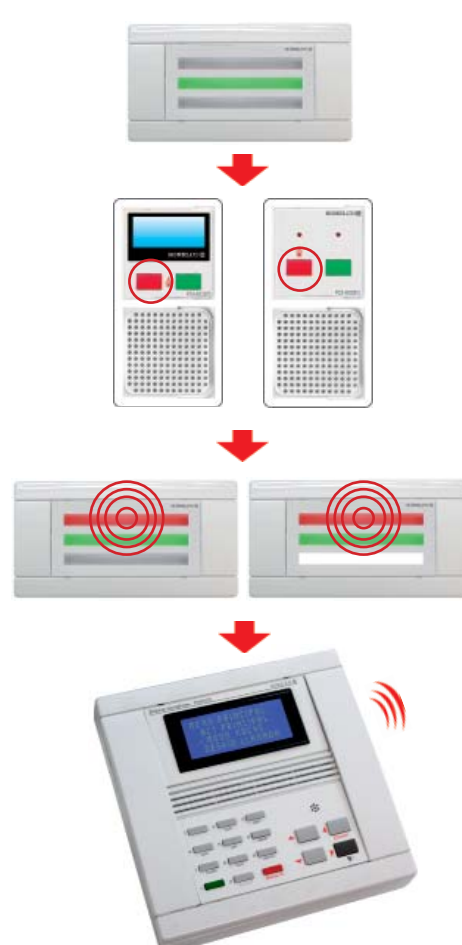
■ Cancelling the call

The call can only be cancelled from the bathroom or room from where the call was made if a PCH6050 module is fitted.



Emergency or help call

This call can be made from any module in the room or bathroom, providing the nurse's presence is acknowledged (by pressing the green button). If the module has a display (PCH6025) in the room, the call type is shown on it.



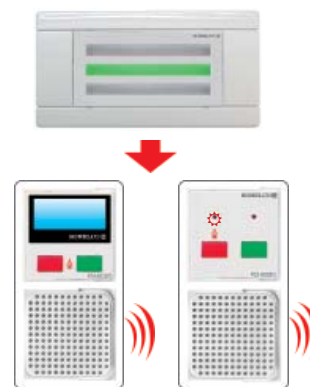
This call takes priority over all others, and a flashing red light is seen in the corridor electronic module (PH6011) after it is made. The green presence light is continuous, as well as the white light if the call was made from the bathroom.

The PH6000 floor control point emits a slow beeping sound (with a frequency in accordance with the standard VDE 0834) and a signal in the display indicates the room and bed from where the call was made



■ Rooms with set presence

The patient call also causes a beeping noise in the rooms where a nurse set presence (with the green button pressed), and this will be shown as a green light on the electronic module PH6011 in the corridor. The beep is heard through the room speaker of a PCH6022 system. Additionally, the red LED on a PCH6020 module lights up with greater intensity, and the call is also shown in the room on a PCH6025 module display, if fitted.



■ Answering a call

The call can be answered from the control station (PH6000)



■ Cancelling the call

The call can only be cancelled from the bathroom or room from where the call was made.

3. Systems for setting presence, making and cancelling calls (without voice communication)

Normal call

This call is made by pressing the red button on PCH6030 call modules, the pear type pushbuttons PH6031 or the nurse presence modules PCH6020/PCH6025. When a call is made, the LED incorporated in the module from which the call was made becomes reassuringly brighter. If the module has a display (PCH6025) in the room, the call is shown on it



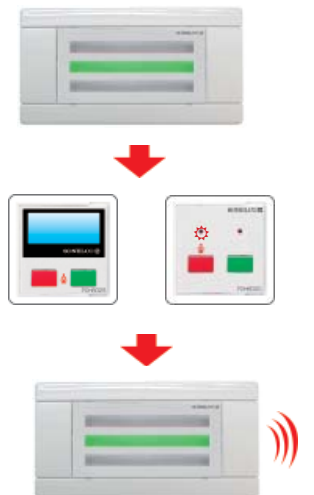
When a call is made, a continuous red light is seen on the electronic module in the corridor (PH6011), according to the standard VDE 0834

The PH6000 nurse control station emits a slow beeping sound (with a frequency in accordance with the standard VDE 0834) and a signal on the display indicates the room and bed from where the call was made



■ Rooms with set presence

The patient call also causes a beeping noise in the rooms where a nurse set presence (with the green button pressed), and this will be shown as a green light on the electronic module PH6011 in the corridor. The alarm is sounded by the beeper which must be connected to the corridor module PH6011. Additionally, the red LED on a PCH6020 module lights up with greater intensity, and the call is also shown in the room on a PCH6025 module display, if fitted.



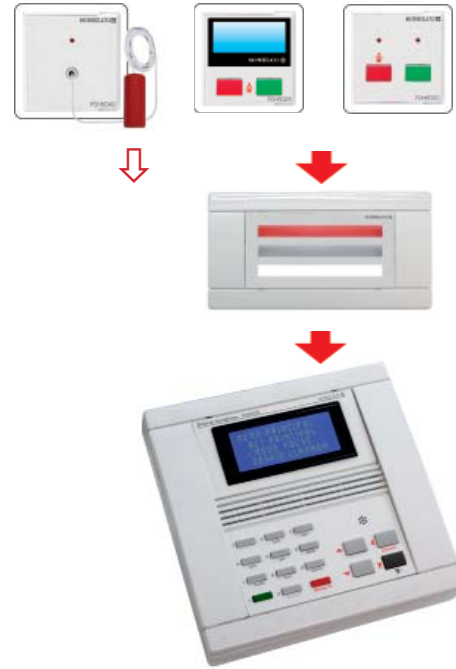
■ Cancelling the call

The call can only be cancelled from the room from where the call was made



Bathroom call

This call is made by pulling the PCH6040 module cord. When making the call, the module LED lights up reassuringly. If the display module (PCH6025) is available in the room, the call is shown on it



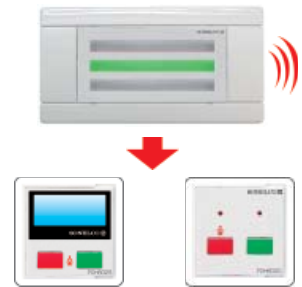
This call takes priority over normal and disconnection calls. When making the call, a continuous red and white light is seen on the electronic module in the corridor (PH6011)

An intermittent beeping sound and a signal on the display are emitted from the PH6000 control station, indicating the room from where the call was made and its type



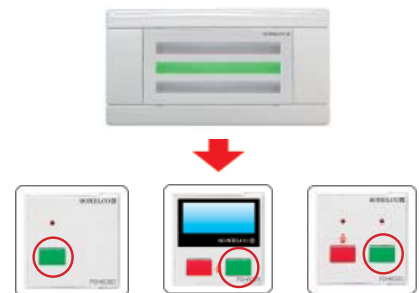
Rooms with set presence

The patient call also causes a beeping noise in the rooms where a nurse set presence (with the green button pressed), and this will be shown as a green light on the electronic module PH6011 in the corridor. The alarm is sounded by the beeper which must be connected to the corridor module PH6011. Additionally, the red LED on a PCH6020 module lights up with greater intensity, and the call is also shown in the room on a PCH6025 module display, if fitted



Cancelling the call

The call can only be cancelled from the bathroom or room from where the call was made if a PCH6050 module is fitted



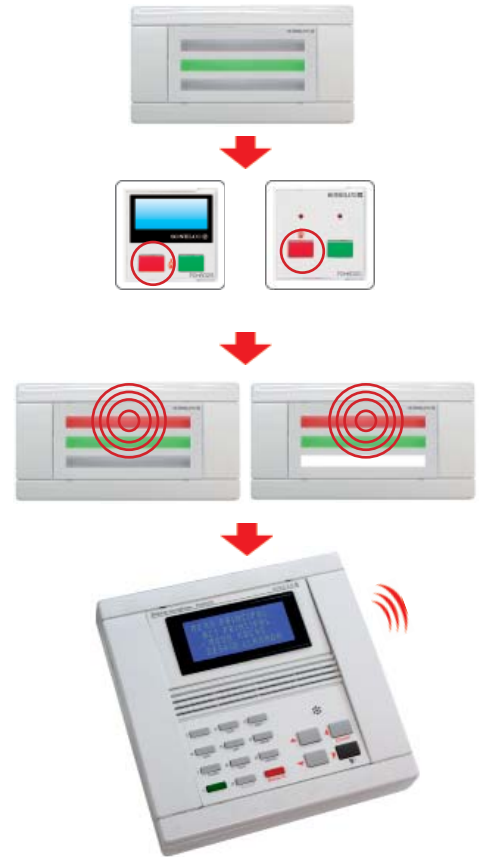
Emergency or help call

This call can be made from any module in the room or bathroom, providing the nurse's presence is acknowledged (by pressing the green button). If the module has a display (PCH6025) in the room, the call type is shown on it.



This call takes priority over all others, and a flashing red light is seen in the corridor electronic module (PH6011) after it is made. The green presence light is continuous, as well as the white light if the call was made from the bathroom.

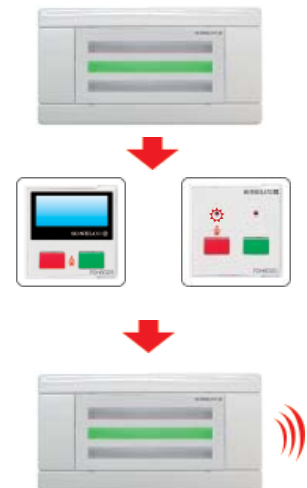
The PH6000 floor control point emits a slow beeping sound (with a frequency in accordance with the standard VDE 0834) and a signal in the display indicates the room and bed from where the call was made



Rooms with set presence

The patient call also causes a beeping noise in the rooms where a nurse set presence (with the green button pressed), and this will be shown as a green light on the electronic module PH6011 in the corridor. The alarm is sounded by the beeper which must be connected to the corridor module PH6011.

Additionally, the red LED on a PCH6020 module lights up with greater intensity, and the call is also shown in the room on a PCH6025 module display, if fitted.



Cancelling the call

The call can only be cancelled from the bathroom or room from where the call was made

Disconnection call

This call is made 10 seconds after disconnecting the jack from the button PH6031 from the call module PCH6030.

It is indicated by audible and visual signalling on the floor control



When a call is made, a continuous red light is seen on the electronic module in the corridor (PH6011)

The call is cancelled by re-connecting the jack from where it was disconnected



MODULES

CONTROL

PH6000 - Control station



This controls all the information flow from the rooms. It reports room calls so they can be attended to, and it enables voice communication between nurse and patient where this module is fitted. It has a high visibility, blue alphanumeric LCD display (4 lines), a microphone with automatic gain control, which improves communication, and a high quality speaker. It includes a jack for the PH6001 auxiliary telephone where privacy is desired.

Patient calls are answered by pressing a button. Calls can be made to the rooms individually or all at once via the alphanumeric keyboard. Various control stations can be interconnected, with a divert facility to one of them when required. Each control station can control up to 99 rooms (PH6010 or PH6011 modules). Maximum of 50 interconnected control stations.

Colour: White
Dimensions: 150 x 150 x 80 mm

PH6001 - Handset



Optional extra to combine with the PH6000 control station. Picking up the handset automatically bypasses the control station speaker, which allows private communication between the nurse and patient.

P5906 - Cable



Cable: 5m with 2 male DB15 connectors for the control station.

PCH6009 - Connection module



Connection module used for connecting the control station and the room electronic control modules associated with it. Also, if there are several control stations in the facility, the connection module can be used to connect them all together.

It can also be installed with an extensive range of frames from electronic manufacturers, using the appropriate adaptor.

Installation: Box with 60 mm distance between axes.
Colour: White
Front plate: KCP9300-01 or KCP9302-01 (double) from Sonelco.

P3262 - Power supply

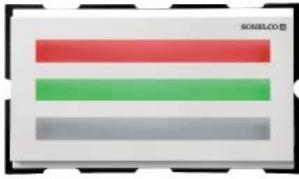


Power supply 4A 16 V DC. For up to 13 rooms with intercom (up to 11 rooms if PCH6025 module display is fitted), and up to 40 rooms without intercom (up to 30 rooms if PCH 6025 module display is fitted).

Installation: DIN rail (9 units).
Dimensions: 155 x 85 x 58 mm

ROOMS

PH6011 - Electronic room and lighting control module



Includes LEDs in green, red and white.

It manages the information produced inside a given room and transmits it to the control point, and also controls the LED signalling for the module itself and the rest of the room. It can control and identify 2 beds per room, or more beds with room identification only. The LEDs indicate the type of call made: normal (red), bath (white), presence of nurse (green), emergency (flashing red and green) and bath emergency from the bathroom only (flashing red and green and continuous white). There is a 15V dc connection for a buzzer to be used only where there is no speaker in the room, and whenever calls need to be received where a nurse is also present.

*Installation: 4901 box from Sonecco. Dimensions: 120*62*44 mm*

Colour: White

*Front plate: KM 9200-01. Dimensions 152*80 mm*

PH6010 - Electronic room control module



This has the same functions and dimensions as the PH6011 model, but without the LEDs.

PCH6025 - Call/cancel module with display



Includes a highly visible, blue 128 x 64 graphic LCD with a red call button and a green button to set the presence of a nurse and to cancel a call. The display shows the source and type of call. Allows a nurse in the room to see if there is a call from another room, to know who is calling and to identify the type of call.

Can also be installed with an extensive range of front plates from electronic manufacturers, using the corresponding adaptor.

Installation: Box with 60 mm distance between axes.

Colour: White

Front plate: KCP9300-01 or KCP9302-01 (double) from Sonecco

PCH6020 - Call/cancel module without display



This has 2 buttons and 2 LEDs. The green button and its corresponding LED are used to register the presence in the room by pressing the button the first time. The second press of the button is to signal the lack of presence in the room or to cancel all nurse calls made in the room. The red key and its corresponding LED are used to make a nurse call from the room (if the presence of a nurse has not been registered) or to make a priority request for help (if the presence of a nurse in the room has been registered).

Can also be installed with an extensive range of front plates from electronic manufacturers, using the corresponding adaptor.

Installation: Box with 60 mm distance between axes.

Colour: White

Front plate: KCP9300-01 or KCP9302-01 (double) from Sonecco.

PCH6022 - Module with microphone/speaker



Installed where an intercom system is desired. The patient is allowed to respond to the control station. Also, a nurse can take calls from other rooms if combined with a PCH6021 module and any module to set presence (PCH6020, PCH6025 or PCH6050).

Can also be installed with an extensive range of frames from electronic manufacturers, using the corresponding adaptor.

Installation: Box with 60 mm distance between axes.

Colour: White

Front plate: KCP9300-01 or KCP9302-01 (double) from Sonelco

PCH6021 - Intercom control module



For nurse use. Allows the nurse to answer calls from other rooms. It has two keys: the black one for talking is used to accept and control communication with the room requesting a nurse; while the grey key is used to cancel the call. Needs to be installed with a PCH6022 speaker/microphone module and a module to set presence (PCH6020, PCH6025 or PCH6050).

Can also be installed with an extensive range of front plates from electronic manufacturers, using the corresponding adaptor.

Installation: Box with 60 mm distance between axes.

Colour: White

Front plate: KCP9300-01 or KCP9302-01 (double) from Sonelco

PCH6030 - Nurse call device with a plug to connect a "pear" button



Includes a call button, and is used to make calls from the beds in the room. It may or may not be associated with a PH6031 "pear" for calls. Incorporates a "reassuring" LED, which lights up more intensely after a call is made. If a nurse set presence and the module call button is pressed, the status is changed to a call for help (emergency call).

Can also be installed with an extensive range of front plates from electronic manufacturers, using the corresponding adaptor.

Installation: Box with 60 mm distance between axes.

Colour: White

Front plate: KCP9300-01 or KCP9302-01 (double) from Sonelco

PH6031 - "Pear" type bed pushbutton



To make calls from the room bed. Incorporates a "reassuring" LED, which lights up more intensely after a call is made. If a nurse set presence and the module call button is pressed, the status is changed to a call for help (emergency call)

PH6039 - Bed pushbutton holder



Wall-mounted holder for the PH6031 "pear" type bed pushbutton

PCH6040 - Bath call cord



Module to install in a universal box incorporating a cord used to call a nurse from a bathroom.

This call can only be cancelled from the bathroom or the room where the call was made, in accordance with the provisions of the hospital standard VDE0834. Includes a “reassuring” LED that lights up after a call is made. If a nurse set presence and the cord is pulled again, the status is changed to a call for help (emergency call).

Can also be installed with an extensive range of front plates from electronic manufacturers, using the corresponding adaptor.

Installation: Box with 60 mm distance between axes.

Colour: White

Front plate: KCP9300-01 or KCP9302-01 (double) from Sonelco

PCH6050 - Call cancellation module



Cancels the call from a patient. It is primarily intended for use in bathrooms. Includes a LED that lights up when the call occurs. This is cancelled by simply clicking once. It can also be used inside the room or bathroom with the double function of setting a presence (when the LED lights up) and cancelling a call (when the LED turns off).

Can also be installed with an extensive range of front plates from electronic manufacturers, using the corresponding adaptor.

Installation: Box with 60 mm distance between axes.

Colour: White

Front plate: KCP9300-01 or KCP9302-01 (double) from Sonelco

A SYSTEM WITH GREAT BENEFITS

EASY INSTALLATION - ROOM MODULES IN A UNIVERSAL BOX

Installation is very simple. The electronic room control modules (PH6011) are installed on one side in the corridor above the door of the room in the Sonelco P4901 box, where they are connected to each other via a 5-wire serial bus. Each control module is wired to the various room and bathroom components, which are installed in a universal box.

COMBINATION WITH ELECTRONIC MECHANISMS

Room and bathroom modules can be installed with an extensive range of front plates from electronic manufacturers, for maximum aesthetic consideration.

Note: Sonelco modules for a universal box are supplied in white only. Contact Sonelco for adaptors that are compatible with this system.

EASY MAINTENANCE

The rooms are sealed areas, so the failure of any of its modules does not affect the rest of the system. Replacing a module is very simple: just change the module and the system recognizes it.

The electronic room control module is easily changed without entering the room. Just assign the address from the control station and connect it.

If the control station is changed, there is no need to re-programme the entire system. The new control point retrieves the data from the electronic room modules.

EASY, TIME-SAVING OPERATION

The intercom system helps to reduce nursing staff workload by preventing unnecessary trips, for a faster and more effective care regime.

Operation of the system is very simple. It can be easily configured to operate in normal mode or night mode, if required to divert calls from various control points to a designated one.

INCREASED PATIENT COMFORT

The intercom system increases the comfort of patients by treating them quicker, allowing more immediate contact with the caregiver.

WIRING

A 5-wire bus is used between control points and for the corridors using: 2 x 1mm² for power, 1 x 0.25mm² for audio and a twisted pair of 0.25mm for the communication bus. Cable model PH6090.

The internal wiring of the rooms can be done with UTP.

INSTALLATION EXAMPLES

The modules installed depend on the performance features required. Below are some examples with the necessary components:

1.1 Installation example:

- *Voice communication between the control station and rooms, as well as the nurse present in a room and the rest of the rooms*
- *Setting presence, making and cancelling a call*
- *With display*

Control:

- 1 PH6000 Control station
- 1 P5906 Cable for control station with DB15 connectors
- 1 PCH6009 Connection module, with DB15 connector
- 1 KCP9300-01 Decorative frame for a 45 x 45 mm. module
- 1 PC9001 Universal box, connectable.
- 1 P3262 Power supply (1 for every 11 rooms)

Equipment per room

Electronic room control module:

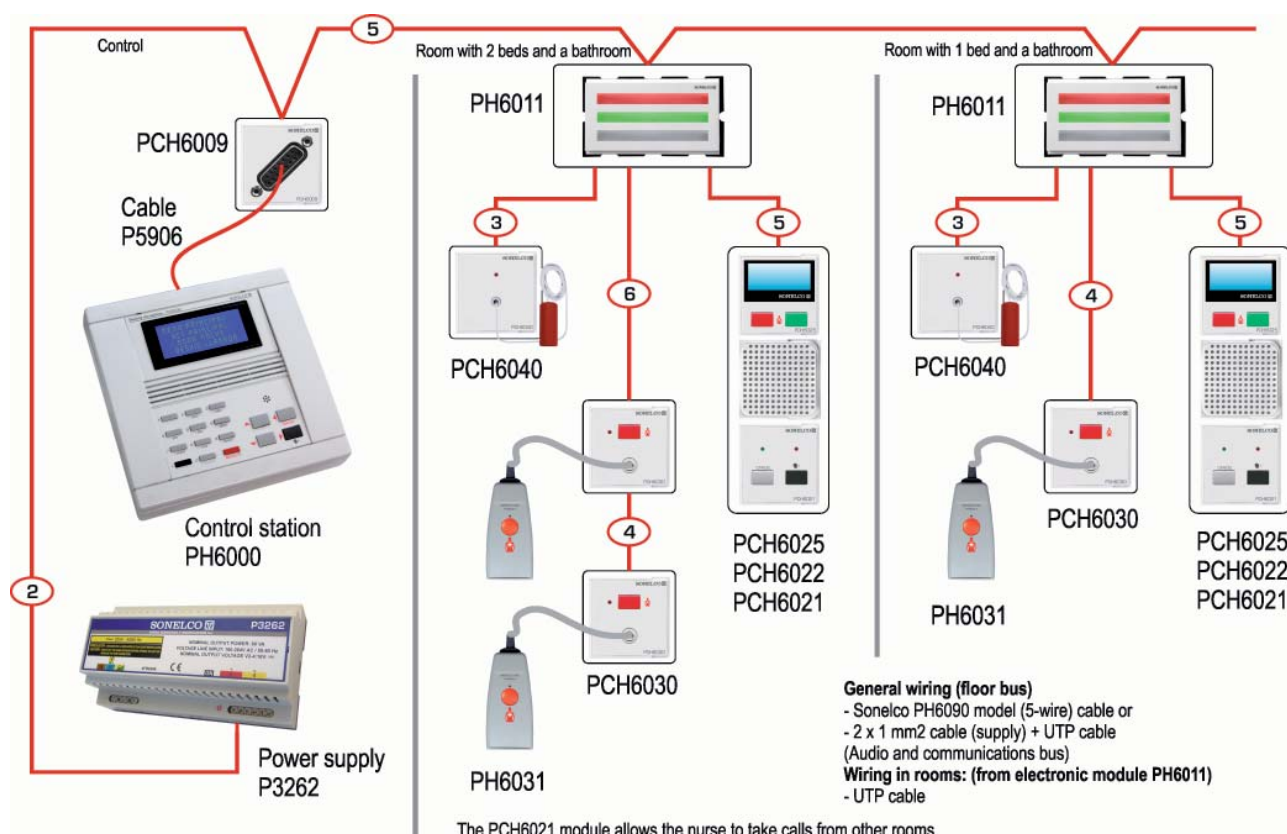
- 1 PH6011 Electronic module with LED illumination included
- 1 KM9200-01 Decorative frame
- 1 P4901 Recessed box for PH6011 module

Set of control elements for health personnel:

- 1 PCH6025-01 Module for presence of nurse and call, with display
- 1 PCH6022-01 Module with microphone and speaker
- 1 PCH6021-01 Intercom control module
- 1 KCP9303-01 Decorative frame for three 45 x 45mm modules
- 3 PC9001 Universal box, connectable

Patient call devices (room with 2 beds and a bathroom):

- 2 PCH6030-01 Nurse call module
- 2 PH6031 Pear type bed pushbutton
- 1 PCH6040-01 Bathroom pull cord
- 3 KCP9300-01 Decorative frame for a 45 x 45mm module
- 3 PC9001 Universal box, connectable



1.2 Installation example:

- Voice communication between the control station and rooms, as well as the nurse present in a room and the rest of the rooms
- Setting presence, making and cancelling a call

Control:

- 1 PH6000 Control station
- 1 P5906 Cable for control station with DB15 connectors
- 1 PCH6009 Connection module, with DB15 connector
- 1 KCP9300-01 Decorative frame for a 45 x 45 mm. module
- 1 PC9001 Universal box, connectable.
- 1 P3262 Power supply (1 for every 13 rooms)

Equipment per room

Electronic room control module:

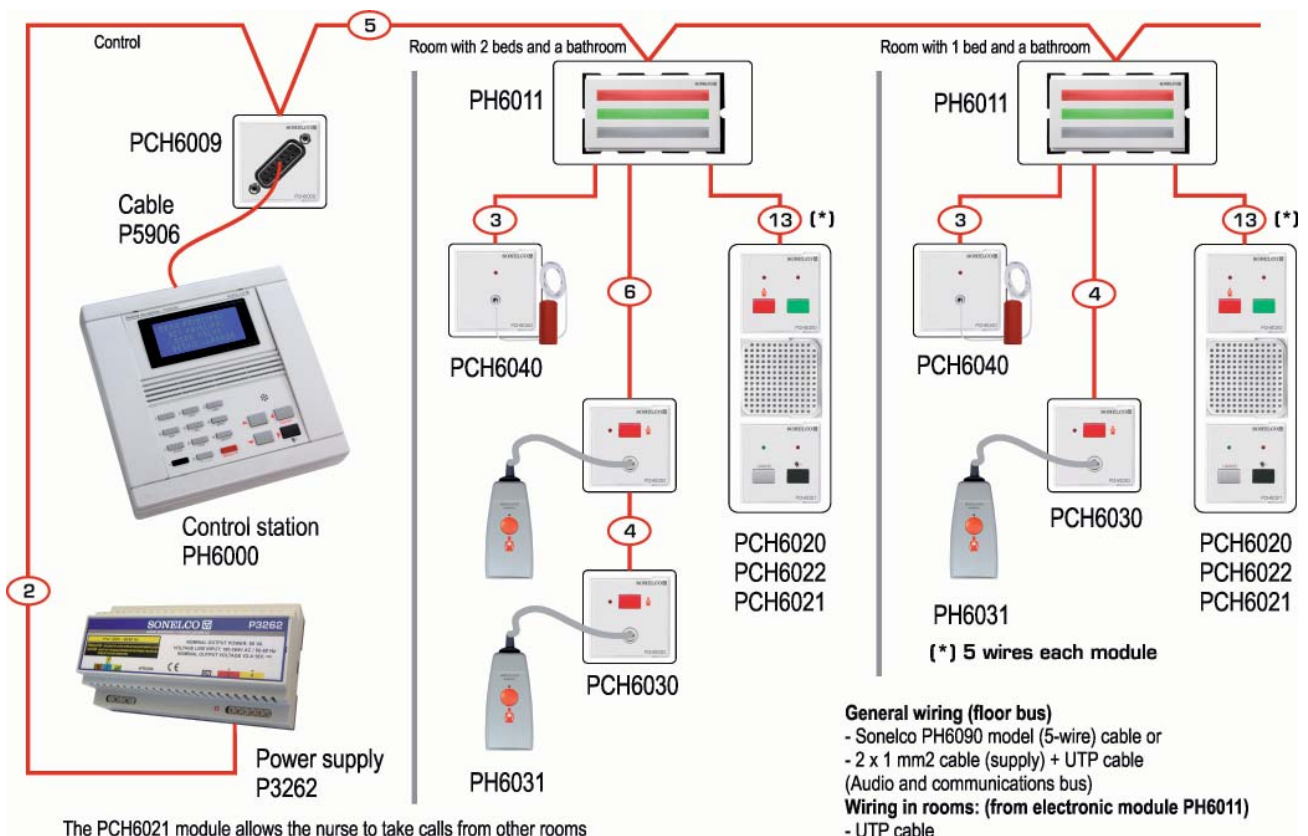
- 1 PH6011 Electronic module with LED illumination included
- 1 KM9200-01 Decorative frame
- 1 P4901 Recessed box for PH6011 module

Set of control elements for health personnel:

- 1 PCH6020-01 Module for presence of nurse and call
- 1 PCH6022-01 Module with microphone and speaker
- 1 PCH6021-01 Intercom control module
- 1 KCP9303-01 Decorative frame for three 45 x 45mm modules
- 3 PC9001 Universal box, connectable

Patient call devices (room with 2 beds and a bathroom):

- 2 PCH6030-01 Nurse call module
- 2 PH6031 Pear type bed pushbutton
- 1 PCH6040-01 Bathroom pull cord
- 3 KCP9300-01 Decorative frame for a 45 x 45mm module
- 3 PC9001 Universal box, connectable



2.1 Installation example:

- Voice communication between the control station and rooms
- Setting presence, making and cancelling a call
- With display

Control:

- 1 PH6000 Control station
- 1 P5906 Cable for control station with DB15 connectors
- 1 PCH6009 Connection module, with DB15 connector
- 1 KCP9300-01 Decorative frame for a 45 x 45mm module
- 1 PC9001 Universal box, connectable
- 1 P3262 Power supply (1 for every 11 rooms)

Equipment per room

Electronic room control module:

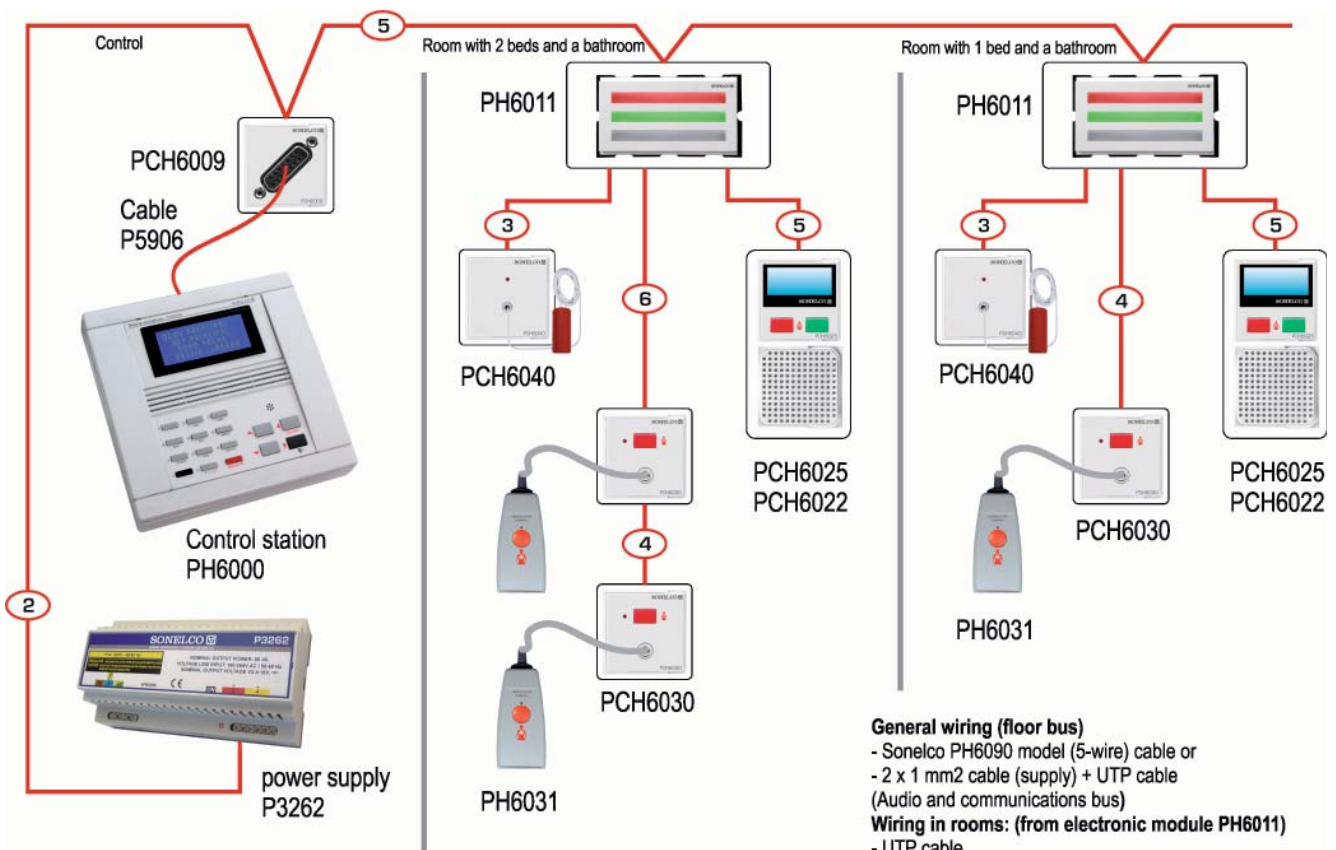
- 1 PH6011 Electronic module with LED illumination included
- 1 KM9200-01 Decorative frame
- 1 P4901 Recessed box for PH6011 module

Set of control elements for health personnel:

- 1 PCH6025-01 Module for presence of nurse and call with display
- 1 PCH6022-01 Module with microphone and speaker
- 1 KCP9303-01 Decorative frame for two 45 x 45mm modules
- 2 PC9001 Universal box, connectable

Patient call devices (room with 2 beds and a bathroom):

- 2 PCH6030-01 Nurse call module
- 2 PH6031 Pear type bed pushbutton
- 1 PCH6040-01 Bathroom pull cord
- 3 KCP9300-01 Decorative frame for a 45 x 45mm module
- 3 PC9001 Universal box, connectable



2.2 Installation example:

- Voice communication between the control station and rooms
- Setting presence, making and cancelling a call

Control:

- 1 PH6000 Control station
- 1 P5906 Cable for control station with DB15 connectors
- 1 PCH6009 Connection module, with DB15 connector
- 1 KCP9300-01 Decorative frame for a 45 x 45mm module
- 1 PC9001 Universal box, connectable
- 1 P3262 Power supply (1 for every 13 rooms)

Equipment per room

Electronic room control module:

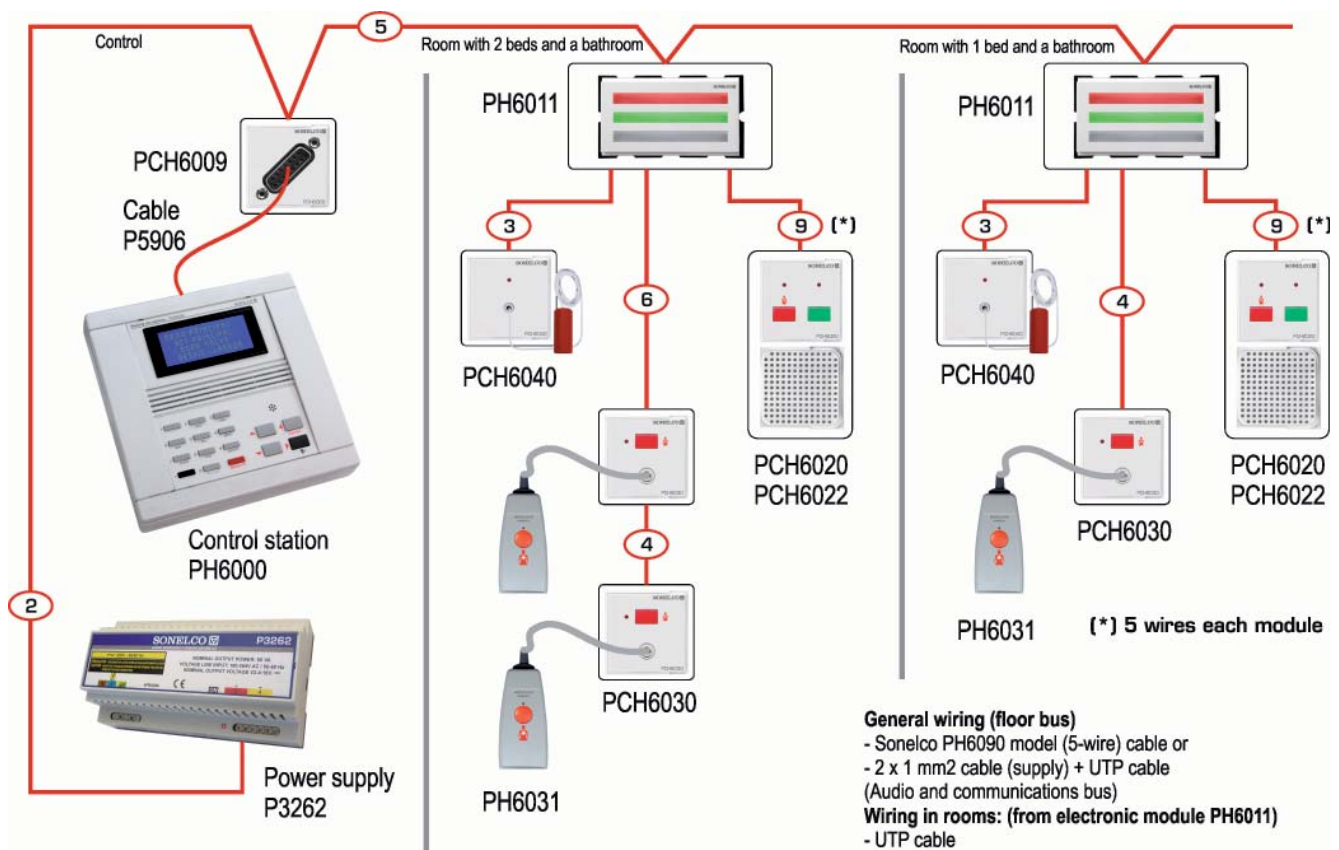
- 1 PH6011 Electronic module with LED illumination included
- 1 KM9200-01 Decorative frame
- 1 P4901 Recessed box for PH6011 module

Set of control elements for health personnel:

- 1 PCH6020-01 Module for presence of nurse and call
- 1 PCH6022-01 Module with microphone and speaker
- 1 KCP9303-01 Decorative frame for two 45 x 45mm modules
- 2 PC9001 Universal box, connectable

Patient call devices (room with 2 beds and a bathroom):

- 2 PCH6030-01 Nurse call module
- 2 PH6031 Pear type bed pushbutton
- 1 PCH6040-01 Bathroom pull cord
- 3 KCP9300-01 Decorative frame for a 45 x 45mm module
- 3 PC9001 Universal box, connectable



3.1 Installation example:

- *Setting presence, making and cancelling a call*
- *With display*

Control:

- 1 PH6000 Control station
- 1 P5906 Cable for control station with DB15 connectors
- 1 PCH6009 Connection module, with DB15 connector
- 1 KCP9300-01 Decorative frame for a 45 x 45mm module
- 1 PC9001 Universal box, connectable
- 1 P3262 Power supply (1 for every 30 rooms)

Equipment per room

Electronic room control module:

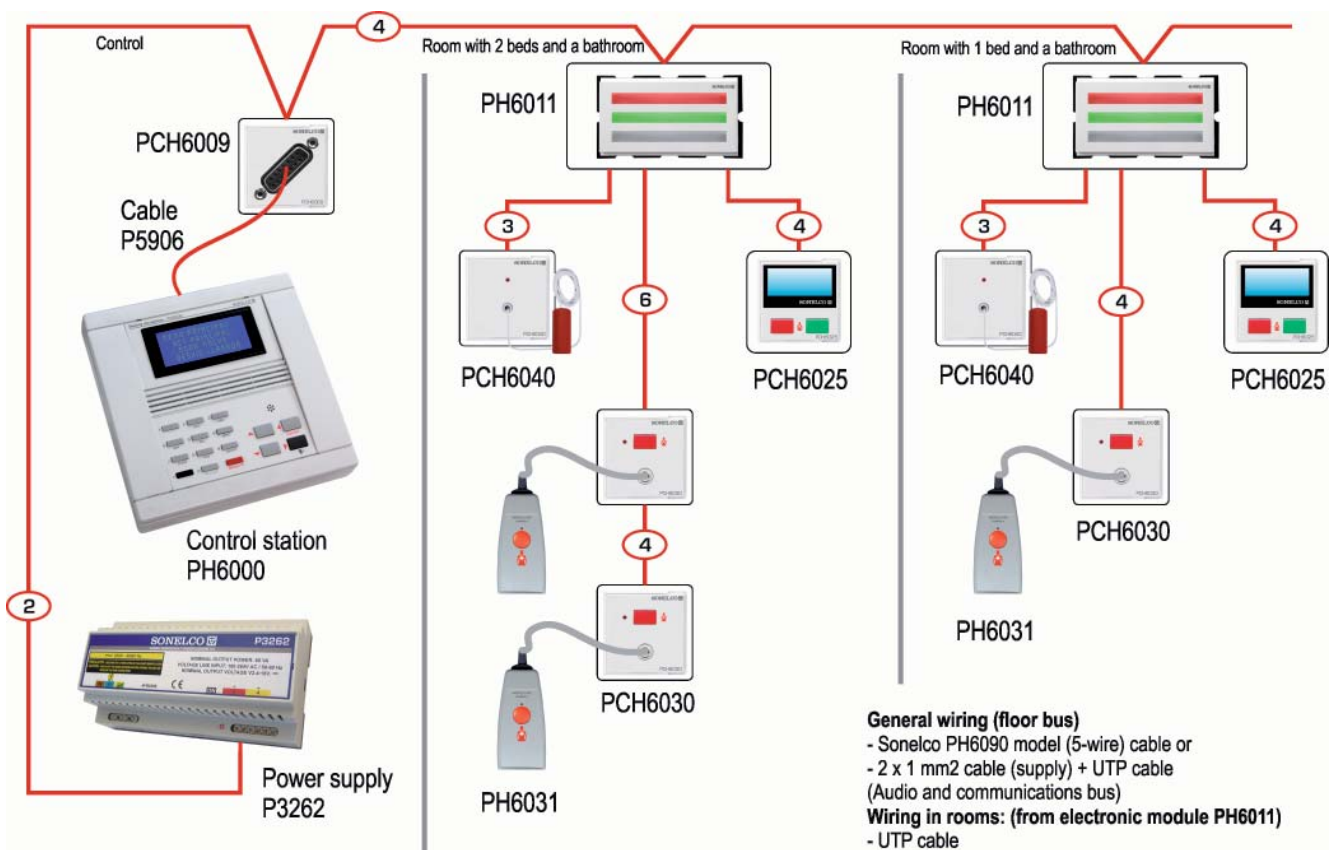
- 1 PH6011 Electronic module with LED illumination included
- 1 KM9200-01 Decorative frame
- 1 P4901 Recessed box for PH6011 module

Set of control elements for health personnel:

- 1 PCH6025-01 Module for presence of nurse and call with display
- 1 KCP9300-01 Decorative frame for one 45 x 45mm module
- 1 PC9001 Universal box, connectable

Patient call devices (room with 2 beds and a bathroom):

- 2 PCH6030-01 Nurse call module
- 2 PH6031 Pear type bed pushbutton
- 1 PCH6040-01 Bathroom pull cord
- 3 KCP9300-01 Decorative frame for a 45 x 45mm module
- 3 PC9001 Universal box, connectable



3.2 Installation example:

- *Setting presence, making and cancelling a call*

Control:

- 1 PH6000 Control station
- 1 P5906 Cable for control station with DB15 connectors
- 1 PCH6009 Connection module, with DB15 connector
- 1 KCP9300-01 Decorative frame for a 45 x 45mm module
- 1 PC9001 Universal box, connectable
- 1 P3262 Power supply (1 for every 40 rooms)

Equipment per room

Electronic room control module:

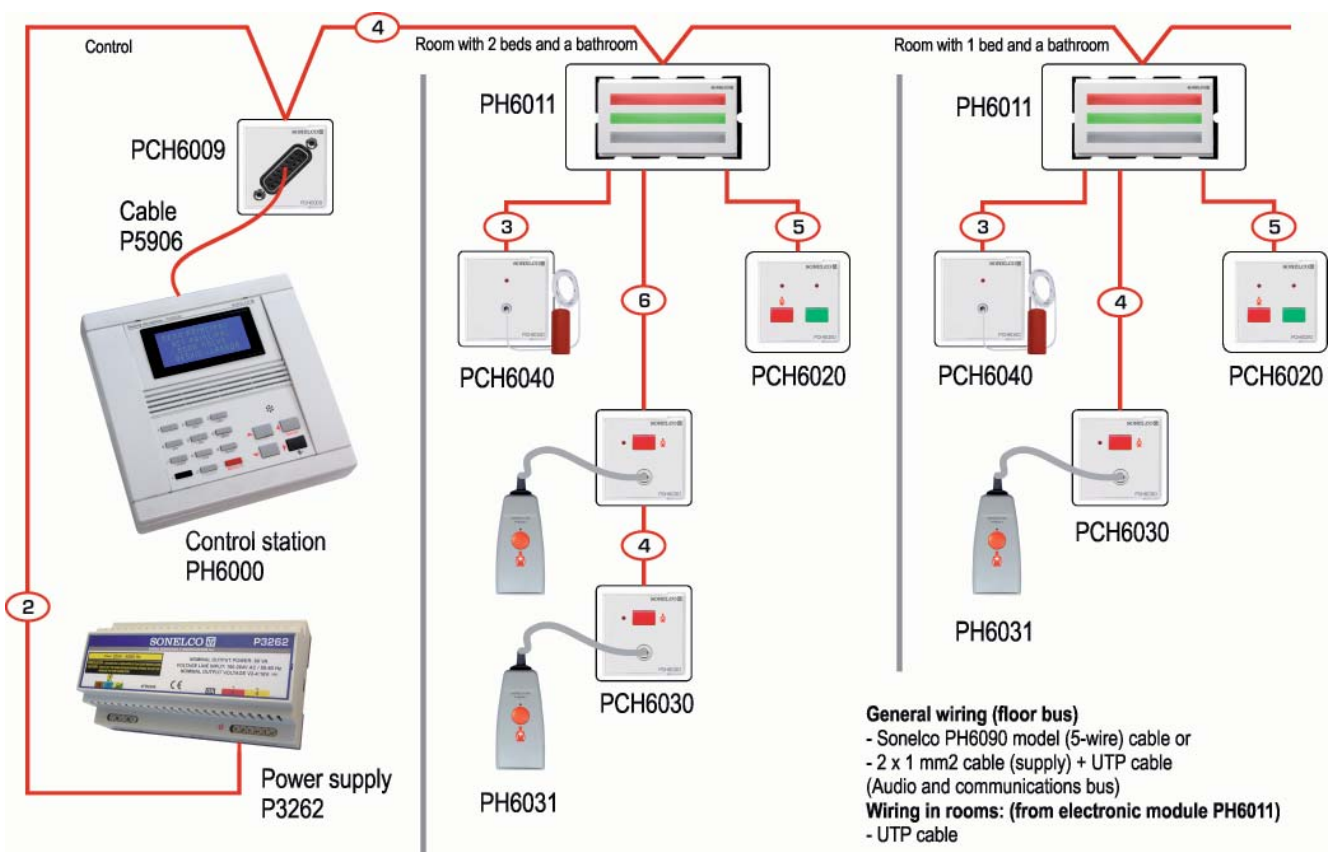
- 1 PH6011 Electronic module with LED illumination included
- 1 KM9200-01 Decorative frame
- 1 P4901 Recessed box for PH6011 module

Set of control elements for health personnel:

- 1 PCH6020-01 Module for presence of nurse and call
- 1 KCP9300-01 Decorative frame for one 45 x 45mm module
- 1 PC9001 Universal box, connectable

Patient call devices (room with 2 beds and a bathroom):

- 2 PCH6030-01 Nurse call module
- 2 PH6031 Pear type bed pushbutton
- 1 PCH6040-01 Bathroom pull cord
- 3 KCP9300-01 Decorative frame for a 45 x 45mm module
- 3 PC9001 Universal box, connectable





SONIDO, ELECTRONICA Y COMUNICACIONES, S.A.

Offices: c/. Africa, 1 - 3

50007 ZARAGOZA - Spain

Tels. 902 259 135 - 976 259 125 - Fax: 976 373 775

Email: export@sonelco.com

www.sonelco.com